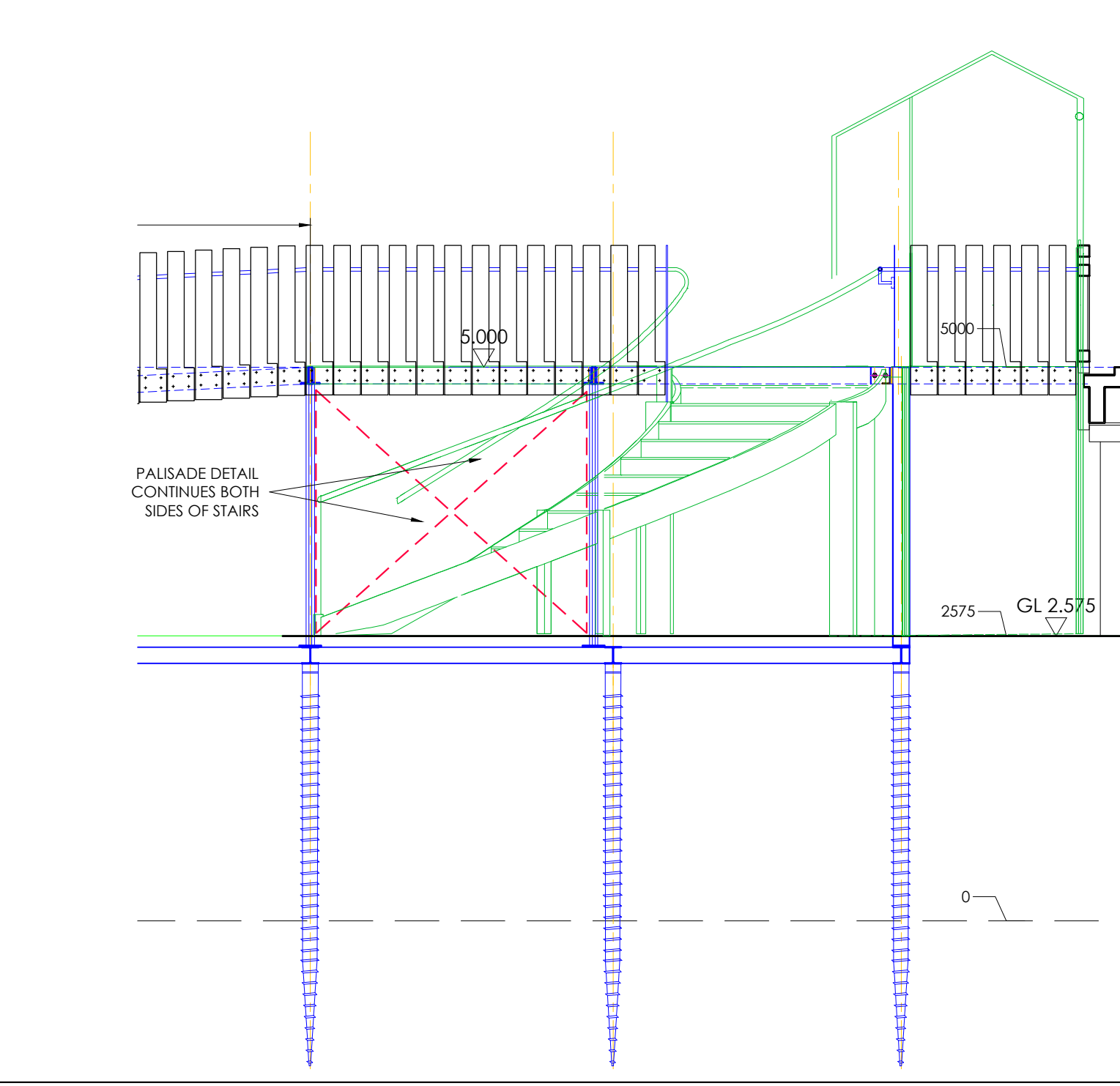
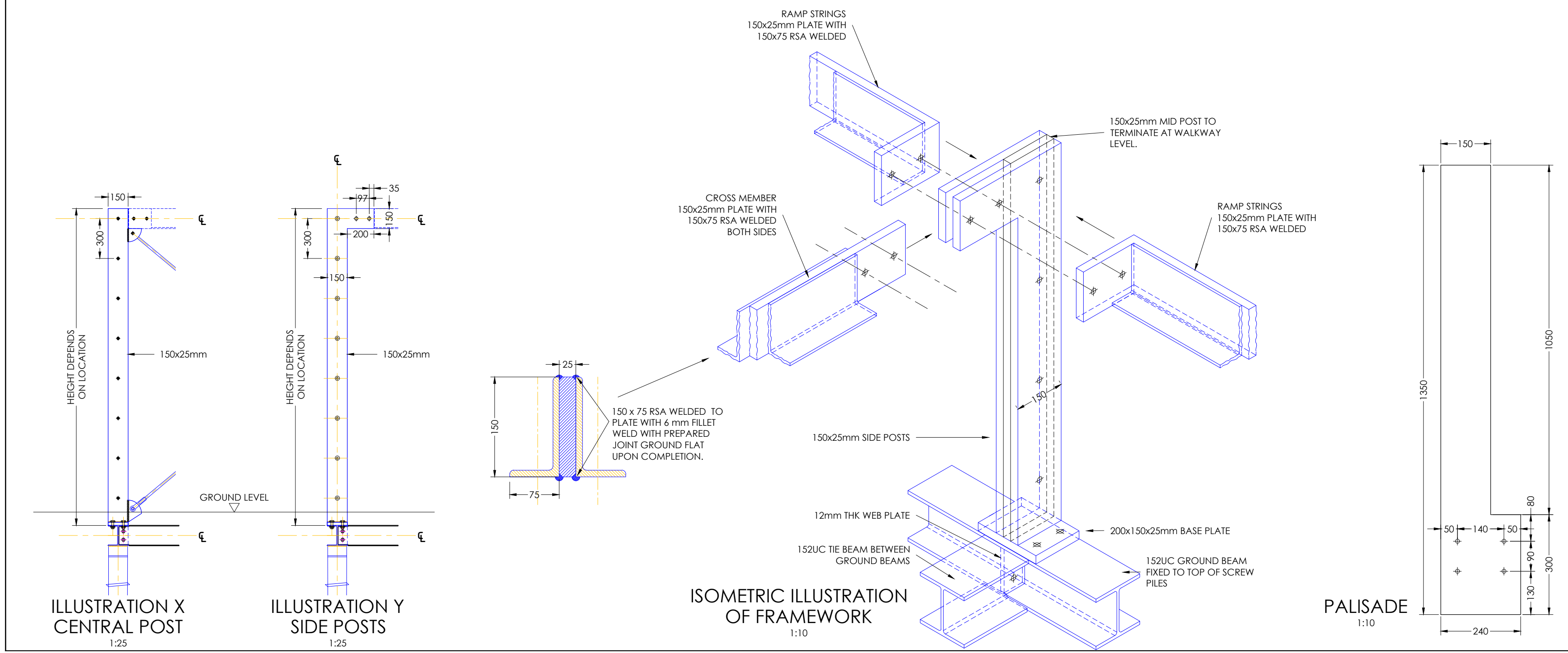


- NOTES
1. NO DIMENSIONS TO BE SCALED FROM THIS DRAWING.
 2. HOCKLEY & DAWSON ARE NOT ACTING AS PRINCIPAL DESIGNERS.
 3. THIS DRAWING TO BE READ WITH ALL RELEVANT ARCHITECTS, ENGINEERS AND SPECIALISTS DRAWINGS.
 4. ALL STRUCTURAL STEELWORK TO BE GRADE S275 TO EN 10025 UNLESS OTHERWISE STATED.
 5. ALL BOLTS TO BE 8.8 GRADE BLACK BOLTS IN 2 mm CLEARANCE HOLES UNLESS OTHERWISE STATED.
 6. ALL STEELWORK TO BE SHOT BLASTED TO SA2 1/2 AND GALVANISED TO COMPLY WITH EN ISO 14713 1 & 2.
 7. ALL SETTING OUT AND SITE DIMENSIONS TO BE THE RESPONSIBILITY OF THE CONTRACTOR.
 8. DESIGN AND INSTALLATION OF TEMPORARY WORKS TO BE THE RESPONSIBILITY OF THE CONTRACTOR.
 9. ALL STAINLESS STEEL TO BE GRADE 316 AUSTENITIC UNLESS OTHERWISE STATED.
 10. ALL CLIENTS' STAFF, CONSULTANTS, AND CONTRACTORS MUST COMPLY WITH ALL CURRENT HEALTH AND SAFETY LEGISLATION INCLUDING:
 - a. CONSTRUCTION (DESIGN & MANAGEMENT) REGULATIONS 2015
 - b. HEALTH & SAFETY AT WORK ACT 1974
 - c. BUILDING SAFETY ACT 2022
 11. AND ALL OTHER RELEVANT LEGISLATION
 12. ALL WORK TO BE CARRIED OUT IN ACCORDANCE WITH THE PROJECT HEALTH AND SAFETY FILE AND METHOD STATEMENTS.
 13. ALL WORK ELEMENTS TO BE CARRIED OUT USING APPROPRIATE TOOLS, METHODS, MATERIALS AND TECHNIQUES.
 14. ALL WORK TO SENSITIVE HISTORIC FABRIC TO BE CARRIED OUT BY SUITABLY EXPERIENCED AND SKILLED PERSONNEL.
 15. CONCRETE TO BE RC35 UNLESS OTHERWISE STATED.
 16. ALL WELDS TO BE 6 mm CONTINUOUS FILLET WELDS UNLESS OTHERWISE STATED.

STAGE 4B ISSUE



STRUCTURE DETAILS UPDATED TO SUIT REVISED BALUSTRADE AND POST ARRANGEMENTS.		17 07 2025
STAGE 4 B.		16 06 2025
rev	description	date
<div>Hockley & Dawson</div> <div>Consulting Engineers</div> <div>Hockley & Dawson Consulting Engineers Limited</div> <div>Telephone 01 483 548784</div> <div>admin@hockleyanddawson.co.uk</div> <div>www.hockleyanddawson.co.uk</div> <div>5 Bittley Courtyard</div> <div>Bramley</div> <div>Surrey</div> <div>GU5 0LA</div>		
project		
TOWER EDUCATION PROJECT		
TOWER OF LONDON		
Historic Royal Palaces		
drawing title		
PROPOSED MOAT RAMP		
STRUCTURAL DETAILS SHEET 2		
S T A G E 4 B		
© COPYRIGHT		
Drawn	CJD	Checked
		CJD
Date	April 2025	Scale
		As stated at A1
Job No	21996	Dwg No
		1 08
		Rev
		B